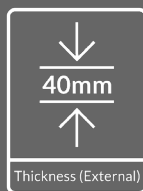
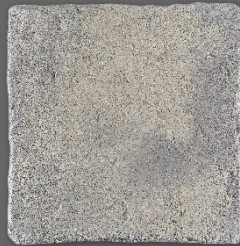


Product Data Sheet

WS0054

Oxford Courtyard Paving



Description

Product Name:	Oxford Courtyard Paving
Product Type:	Stonecast - solid unit with riven surface
Manufacturing Process:	Wet cast, pigmented, moulded and vibrated concrete
Appearance:	Lightly riven antiqued-effect surface and edges. Buff, Cream and Grey tones. Mould masters from reclaimed stone.
Country of Manufacture:	United Kingdom
Governing Standards:	All data, where relevant, to be established in accordance with BS EN 1339:2003 or in-house company specifications. Test data based on 28-day strengths.

Physical Properties

Nominal Sizes mm (as attained with joints):	Project Pack 915 x 610 (3 No. per pack) 915 x 457 (3 No.) 762 x 610 (3 No.) 762 x 457 (3 No.) 610 x 610 (3 No.) 610 x 457 (4 No.) 610 x 305 (4 No.) 457 x 457 (4 No.) 457 x 305 (4 No.) 305 x 305 (3 No.)
Thickness:	40mm external/25mm internal
Size Tolerances:	Length +/- 5mm Width +/- 5mm Thickness +/-3mm
Slip/Skid Resistance:	Satisfactory - low potential for slip Mean polished skid resistance value (PSRV): > 45 Mean unpolished skid resistance value (USRV): > 45
Water Absorption:	≤ 6% by mass as a mean
Durability:	Frost resistant – maybe susceptible to de-icing salts or chlorine-based products

Specification

Emission of Asbestos:	No content
Reaction to Fire:	Class A1, see commission decision 2000/553/EC

Design Guidance

Suitability:	<p>Two thickness specifications available for external or internal use.</p> <p>Indoors or outdoors - domestic and light commercial pedestrian use only. In addition, suitable for domestic driveways only (up to 3.5T max) supported by appropriate construction.</p> <p>For indoor use, we'd recommend the use of a proprietary sealer, appropriate for your specific needs.</p> <p>Not suitable for food preparation work surfaces. Not recommended for seating surfaces.</p> <p>Some dusting can very occasionally occur with Stonecast-type products. If transfer is causing an inconvenience, consider an appropriate dust-proofer.</p> <p>Do not use de-icing salts. There are chemical granules on the market that act in the same manner and will not damage any surfaces, they also claim to be much cleaner and environmentally friendly.</p>
--------------	---

Site Preparation

Installation:	<p>Lay on a full mortar bed with 10- 15mm joints. For more installation advice, please refer to our Planning, Install & Care Guide on our website - www.westminsterstone.com/oxford-courtyard-flagstones</p> <p>For a laying pattern example, please refer to www.westminsterstone.com/oxford-courtyard-flagstones</p>
---------------	--

During install, use product from multiple pallets to ensure a natural blend, even if your packs are batch matched. Try and ensure you've ordered your total requirements before starting the project to minimise the potential for shade variation.

Storage:

Keep all units dry before laying & protect incomplete workings during adverse weather or freezing conditions.

Accessories

We have a range of Oxford Courtyard Bullnosed Flags & Cobbles; alongside Garden Gravels and Garden Features that compliment this paving range to achieve that finishing touch.

Supply

M², No. & Weight per pack:

10 size project pack = 10M² = 34No. mixed / 930KG

Packaging:

All packs are shrink-wrapped onto pallets, suitable for FLT or crane off-load.

Please Note:

Due to the nature of the product and their transportation methods, scuffing and scratch marks may be visible on the surface of units following transportation and handling. We incorporate spacers into our Stonecast products to minimise this. If such marks are apparent, they will weather away naturally due to the through colour nature of the product.

Further Information

Cleaning and Maintenance:

For more detailed advice, please refer to our Planning, Install & Care Guide on our website - www.westminsterstone.com/oxford-courtyard-flagstones

Generally, cleaning with soapy water and a broom is adequate in most conditions. Inappropriate use of power washers may irreversibly age your paving.

We strongly recommend against the use of hydrochloric acid-based cleaners.

Before applying any chemical cleaners or sealants, we strongly recommend taking advice from the manufacturer of the chemical to ensure it is appropriate for your paving, even then, always test an inconspicuous area first before widespread use to ensure a satisfactory outcome.

Sweep leaves regularly. Gathered leaves can quickly decompose and leach tannins that may discolour all hard landscape products. They also encourage algae bloom and other organic growths.

Weathering:

It should be appreciated that all Stonecast products can display differential weathering characteristics and individual site conditions can cause shade variation to appear across the surface of individual units.

Some cleaning maybe needed on all sites and all products. Lighter colours tend to show dirt and darker staining agents more clearly than darker colours, alternatively, darker colours may show lighter staining agents more. Algae, lichens, other organic growths and organic stains can affect any surface in an external environment.

Our products achieve appropriate strength for release after seven days but concrete hydration continues for several weeks.

Efflorescence:

All concrete products, during the early months following installation, may exhibit white carbonation on the surface; in the form of efflorescence, exhibited as patchiness or apparent loss of colour. This condition is an industry wide occurrence and will dissipate naturally with exposure to weathering. It is not a product fault and should not be cause for concern. On the rare occasions it displays, it tends to occur within the first cycle of the seasons and is often most prominent in the Spring and Autumn months due to climatic conditions.

Product Evolution & Specification:

We are continually improving our product design and processes and information is subject to change without notice. We reserve the right to change specification without notice. All sizes, coverages and weights are approximate and subject to tolerances.



Westminster Stone
Shaws Estate
Sodylt
Ellesmere
Shropshire
SY12 9EL

01978 710685
ask@westminsterstone.com
westminsterstone.com

Further advice is available on our website at westminsterstone.com

Should you require any further information or assistance, please, do not hesitate to contact us on 01978 710685 or ask@westminsterstone.com.